

From the city to the forest, an interesting space transition, how do we live in these different places. Each type of space has a different use for each of us, some very busy places some less, very clean places some less. After having visited this course several times, we have noticed that if the urban like nature did not change, elements forming an integral part of the landscape change from day to day, the traces of the passage of human beings, the waste. This is not a demonstration of morality but a fact, nowadays we must accept that waste is an integral part of our landscape, an ephemeral element changing day after day. Our work aims to make this ephemeral element of the landscape, minimal but impactful, an element that is part of the atmosphere of a place. Through this video we list the main waste encountered during our visit to the site in order to become aware of the different places more or less dense, more or less clean. In addition, we classify these elements in order to become aware of what type of elements we encounter on this path. Each element expressing a little more the actions of human beings in this specific place. Nowadays we have to accept that waste are part of our landscape and they are telling us more than what we think on human behaviours.

BIG



WHEELS



IRON
SIGNS



DROPPINGS



CLOTHES



VESPA



WOOD

USED



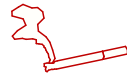
GLASS
BOTTLES



TISSUES



METAL CANS



CIGARETTES



PLASTIC
GLOVES



BANANA

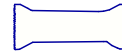


MASK

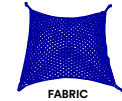


PLASTIC
BOTTLES

WRAPPING



PLASTIC



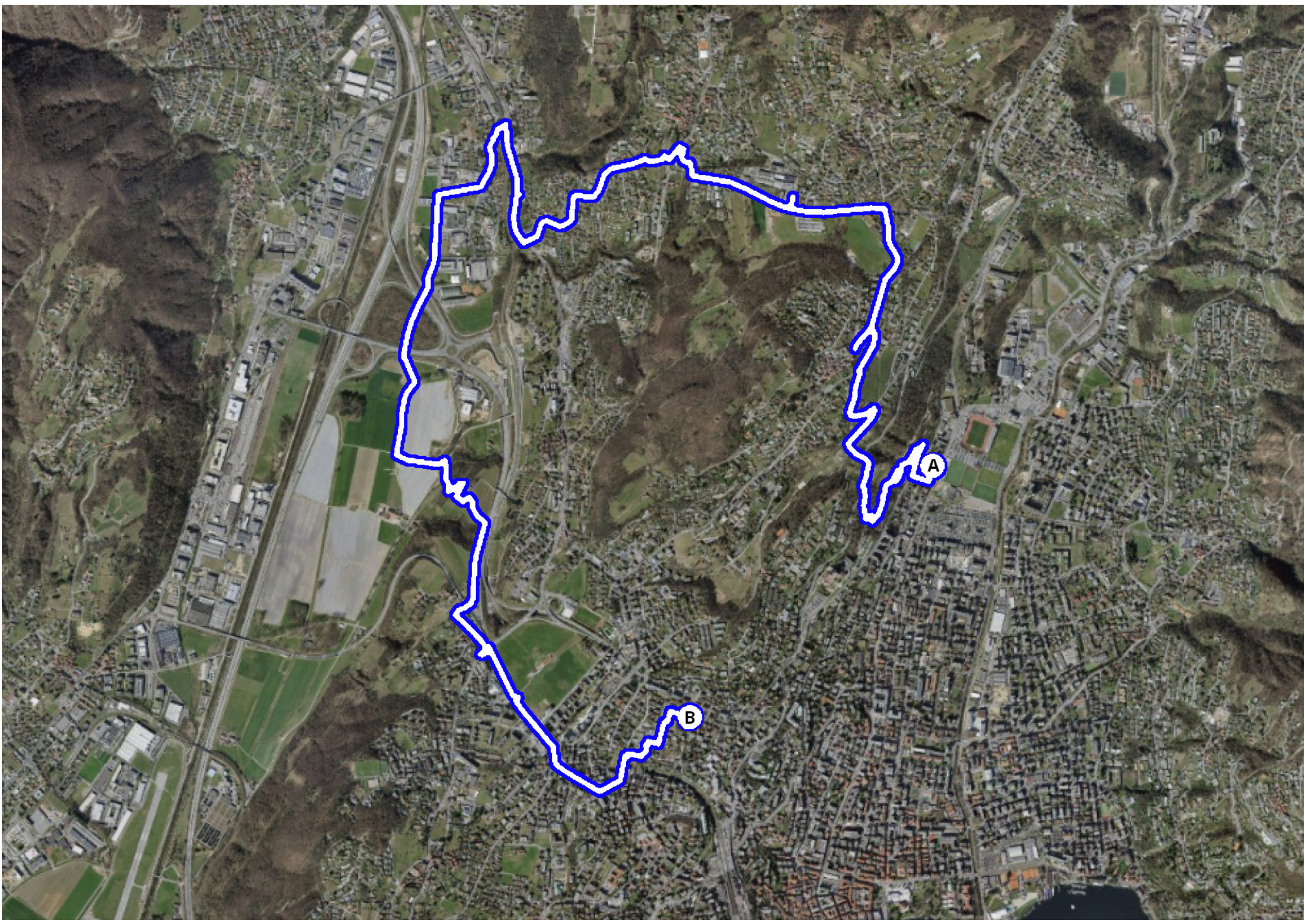
FABRIC

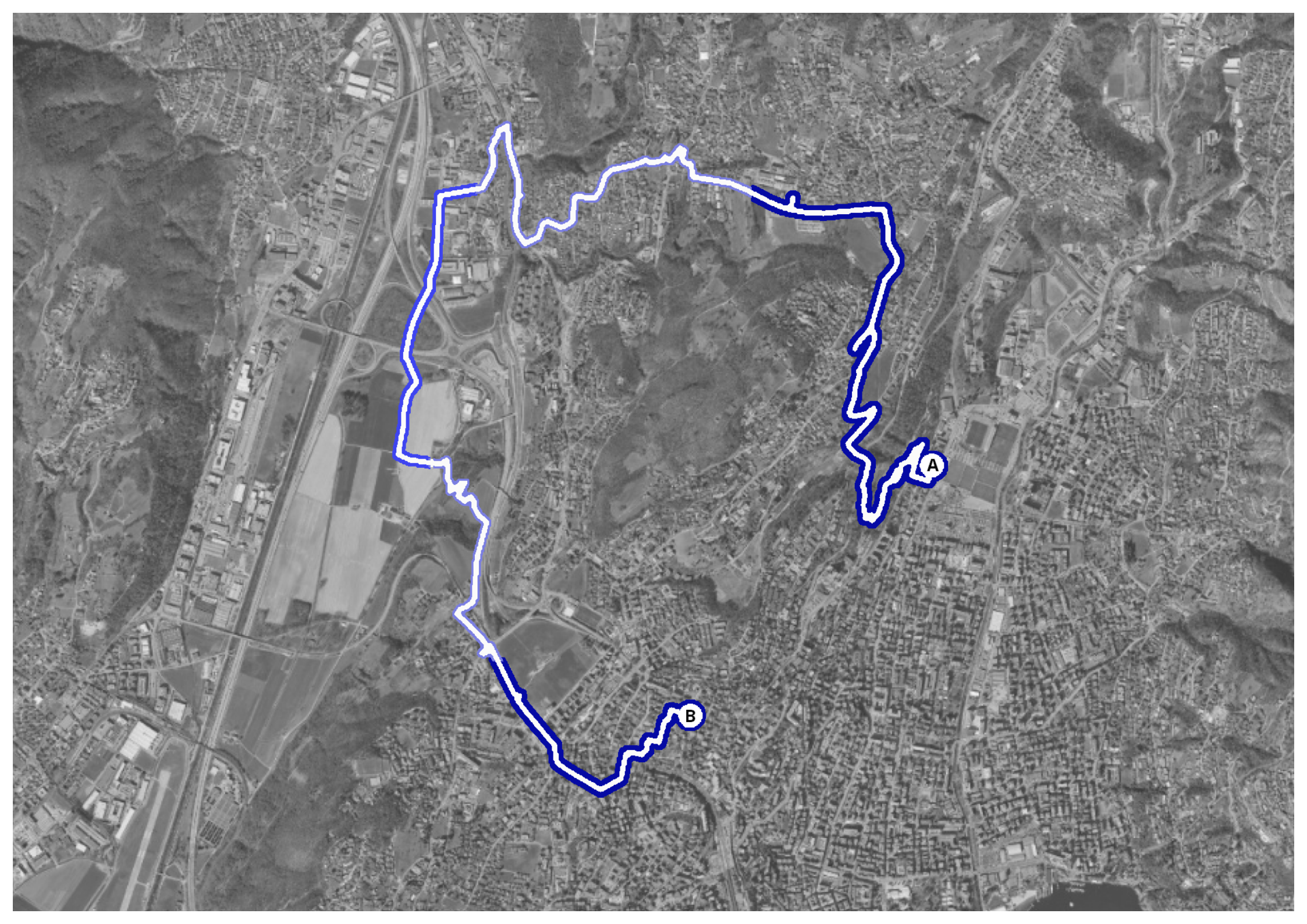


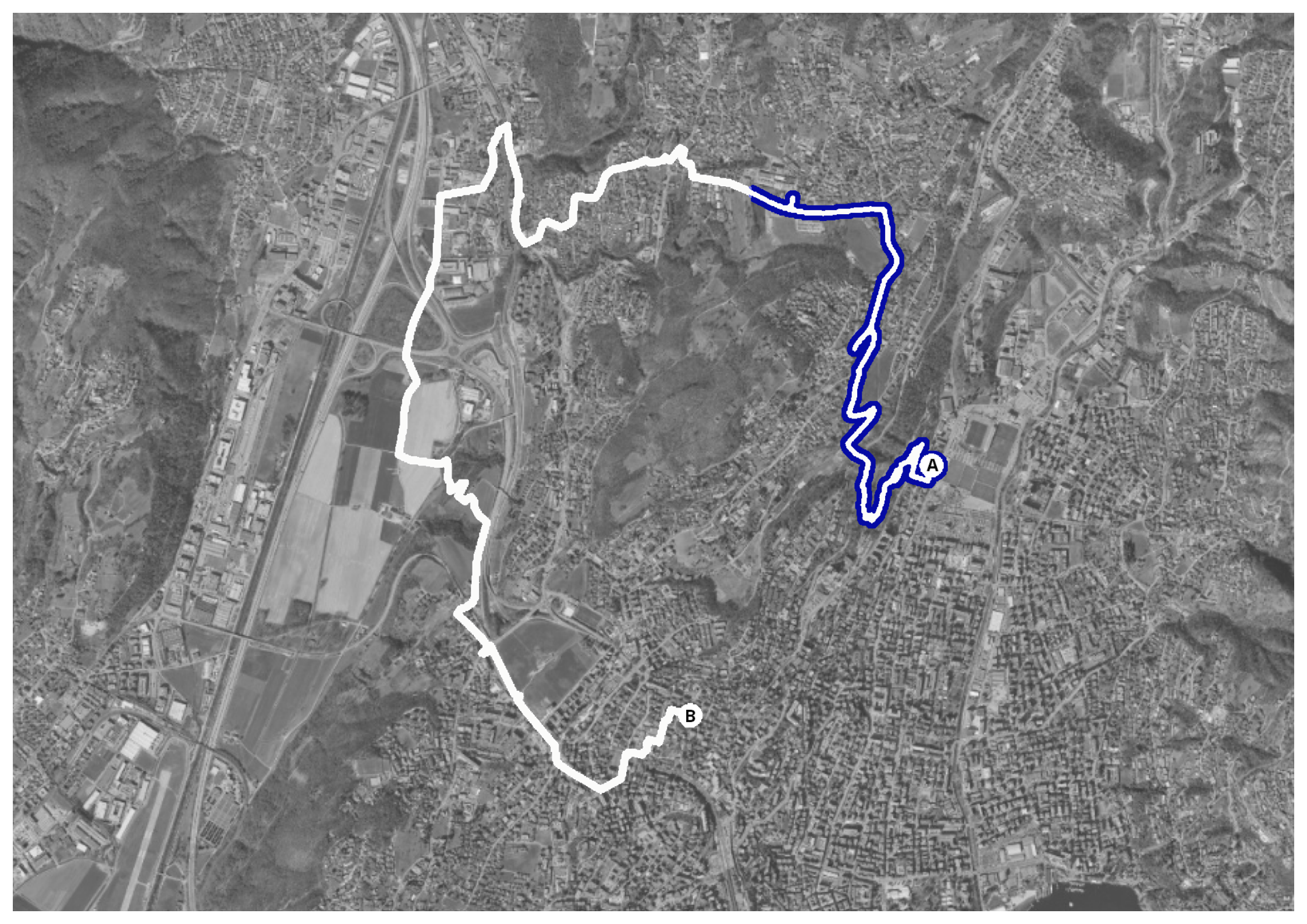
CIGARETTE
PACKS

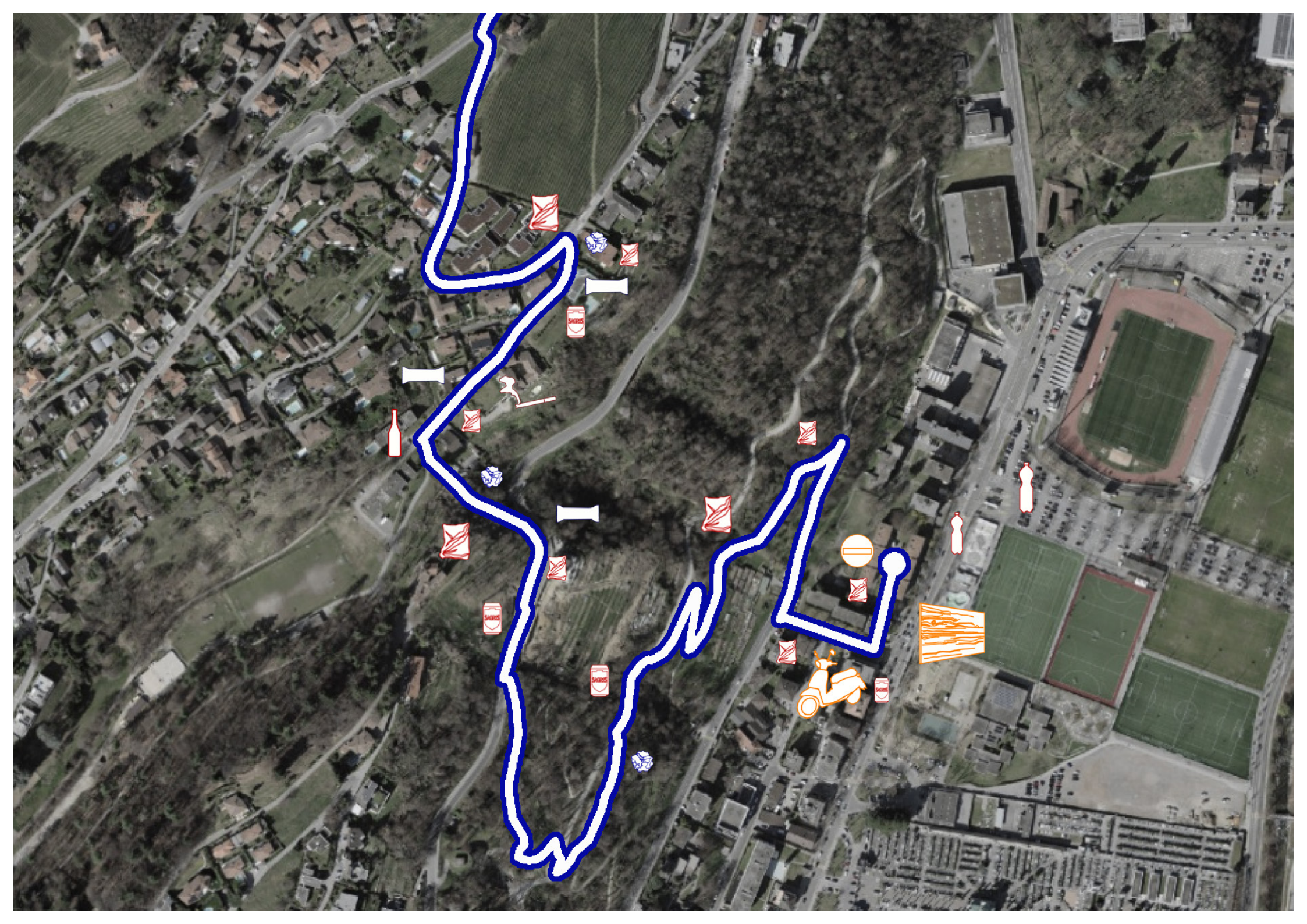


PAPER
CARTON











46.022818, 8.960486



46.022818, 8.960486



46.022659, 8.959279



46.022380, 8.958677



46.022203, 8.958587



46.022203, 8.958587



46.022203, 8.958587



46.022203, 8.958587



46.022002, 8.958444



46.022002, 8.958444



46.022155, 8.957767



46.021969, 8.956360



46.021362, 8.955907



46.021206, 8.955781



46.020755, 8.955456



46.020431, 8.954997



46.021280, 8.954817



46.021880, 8.954852



46.021880, 8.954852



46.022061, 8.954778



46.022227, 8.954924



46.022301, 8.954907



46.022311, 8.954927



46.022985, 8.954620



46.022985, 8.954620



46.023032, 8.954404



46.023267, 8.954121



46.025898, 8.954405



46.026334, 8.954620



46.026932, 8.955040



46.027444, 8.955451



46.027613, 8.955599



46.027999, 8.955195



46.027582, 8.954656



46.028513, 8.955555



46.030219, 8.956357



46.030371, 8.956546



46.031002, 8.956956



46.031167, 8.956777



46.031243, 8.956850



46.031243, 8.956850



46.031416, 8.956699



46.031416, 8.956699



46.031517, 8.956530



46.031517, 8.956530



46.032820, 8.956291



46.032999, 8.955017



46.032932, 8.953633



46.033036, 8.951458



46.033052, 8.951140



46.033480, 8.950933



46.033279, 8.950195



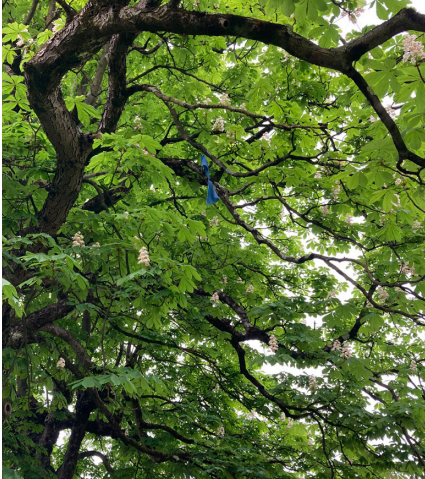
46.033853, 8.948535



46.035053, 8.944994



46.035506, 8.943985



46.035387, 8.943644



46.035085, 8.942783



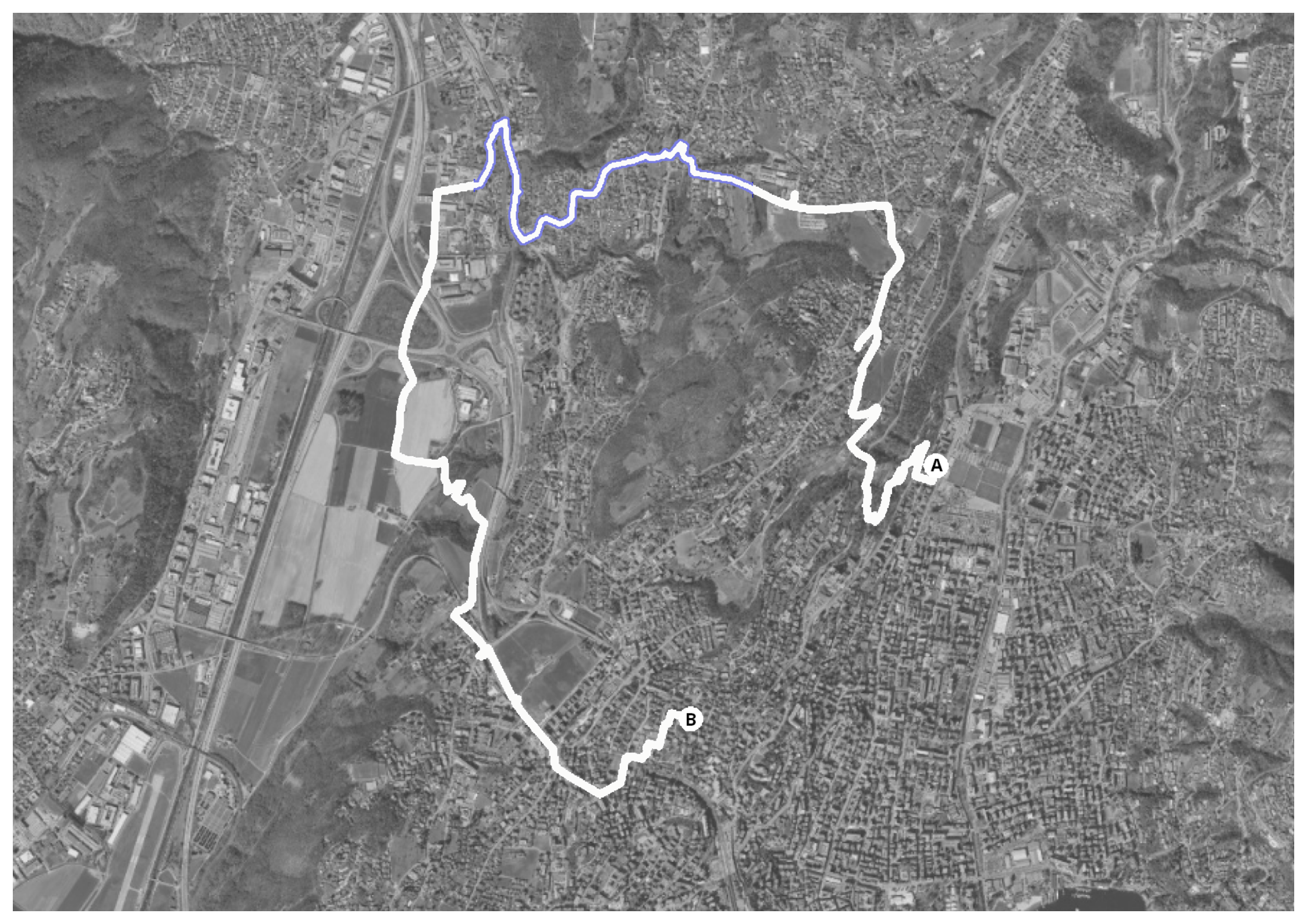
46.035092, 8.942619

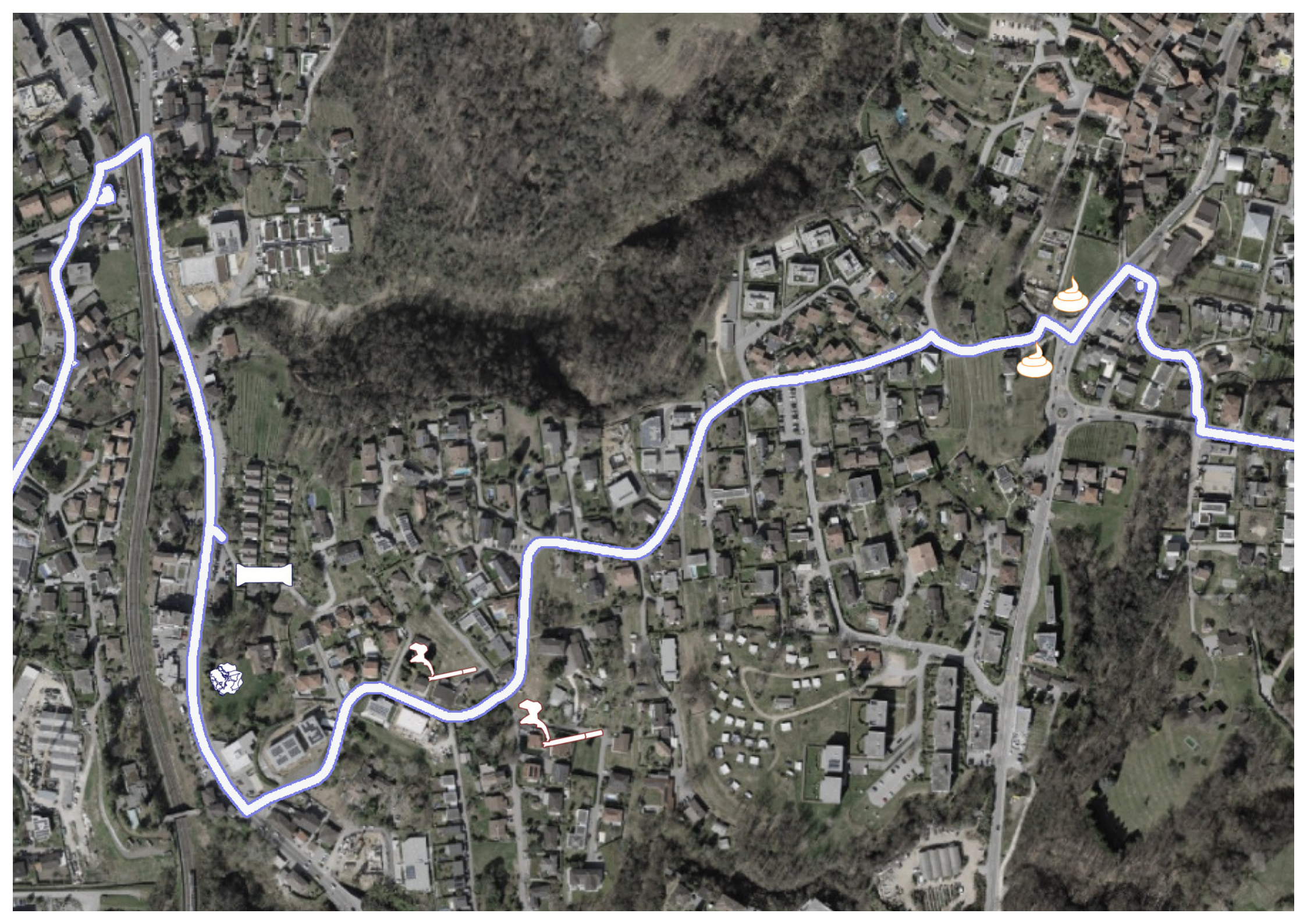


46.035025, 8.941608



46.034689, 8.940053







46.032652, 8.936304



46.033330, 8.935899



46.033330, 8.935899



46.033665, 8.934700



46.035786, 8.934419



46.035257, 8.934401



46.035132, 8.933858



46.035143, 8.942994



46.035158, 8.943260



46.034916, 8.940511



46.034194, 8.939739



46.032795, 8.938039



46.032565, 8.937476



46.032714, 8.936797



46.033433, 8.935738



46.034519, 8.932951



46.034167, 8.932476



46.034033, 8.931457



46.033162, 8.930137



46.031983, 8.930097



46.029393, 8.929016



46.028946, 8.928699



46.028723, 8.928482



46.034177, 8.932317



46.034274, 8.932428



46.033885, 8.930088



46.032418, 8.930028



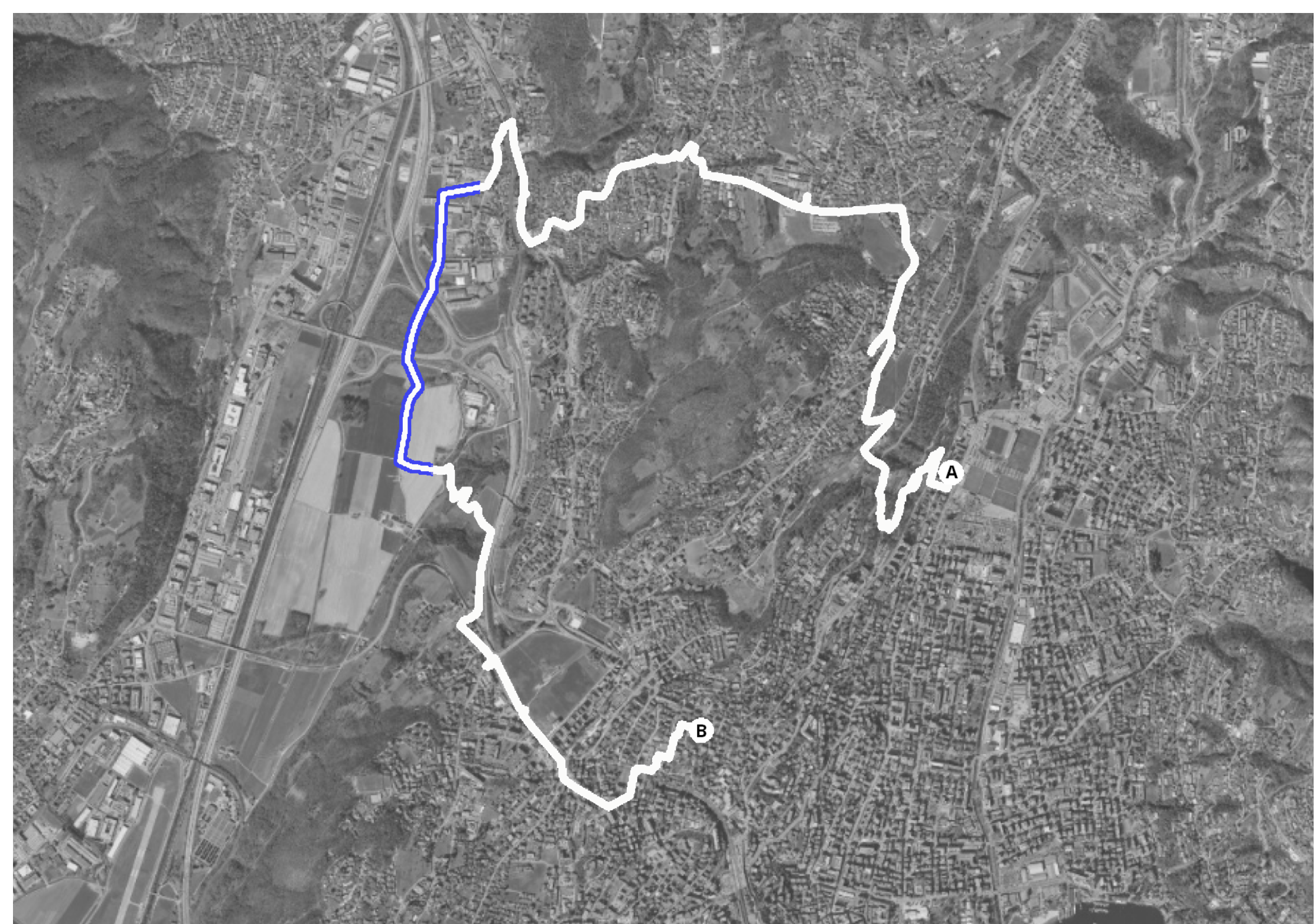
46.031923, 8.930040



46.031355, 8.929934



46.031258, 8.929776





46.029363, 8.928856



46.027799, 8.928140



46.028035, 8.928215



46.027793, 8.928230



46.028866, 8.928571



46.027406, 8.928043



46.027093, 8.928156



46.027026, 8.928260



46.026881, 8.928408



46.026067, 8.928328



46.025978, 8.928234



46.025445, 8.927979



46.024786, 8.927848



46.024786, 8.927848



46.025941, 8.928301



46.025845, 8.928249



46.025554, 8.928179



46.025325, 8.928104



46.025254, 8.928091



46.024607, 8.927824



46.023320, 8.927799



46.023836, 8.927596



46.023419, 8.927588



46.023099, 8.930300



46.022994, 8.930718



46.022393, 8.931453



46.022300, 8.931373



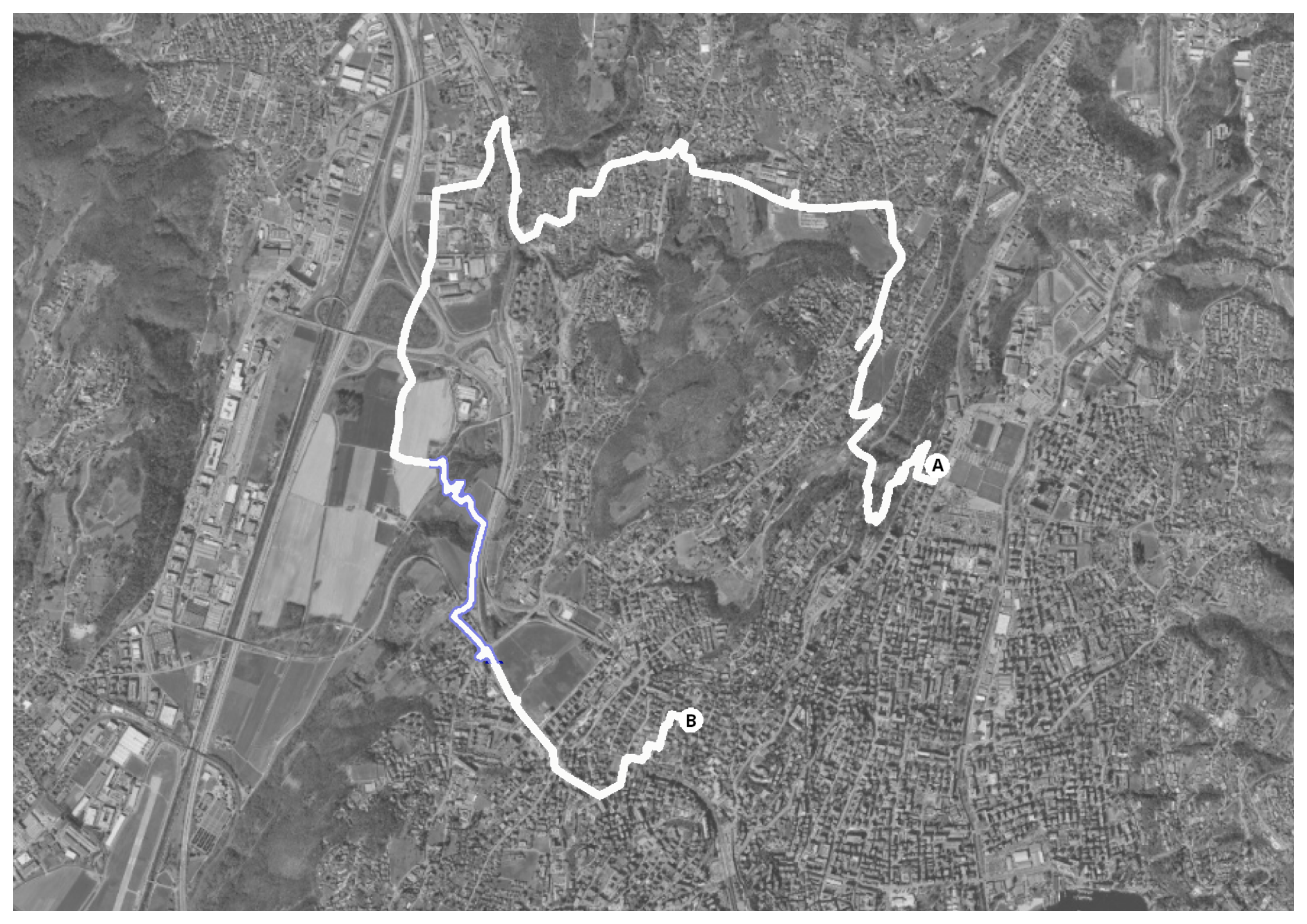
46.022222, 8.931435

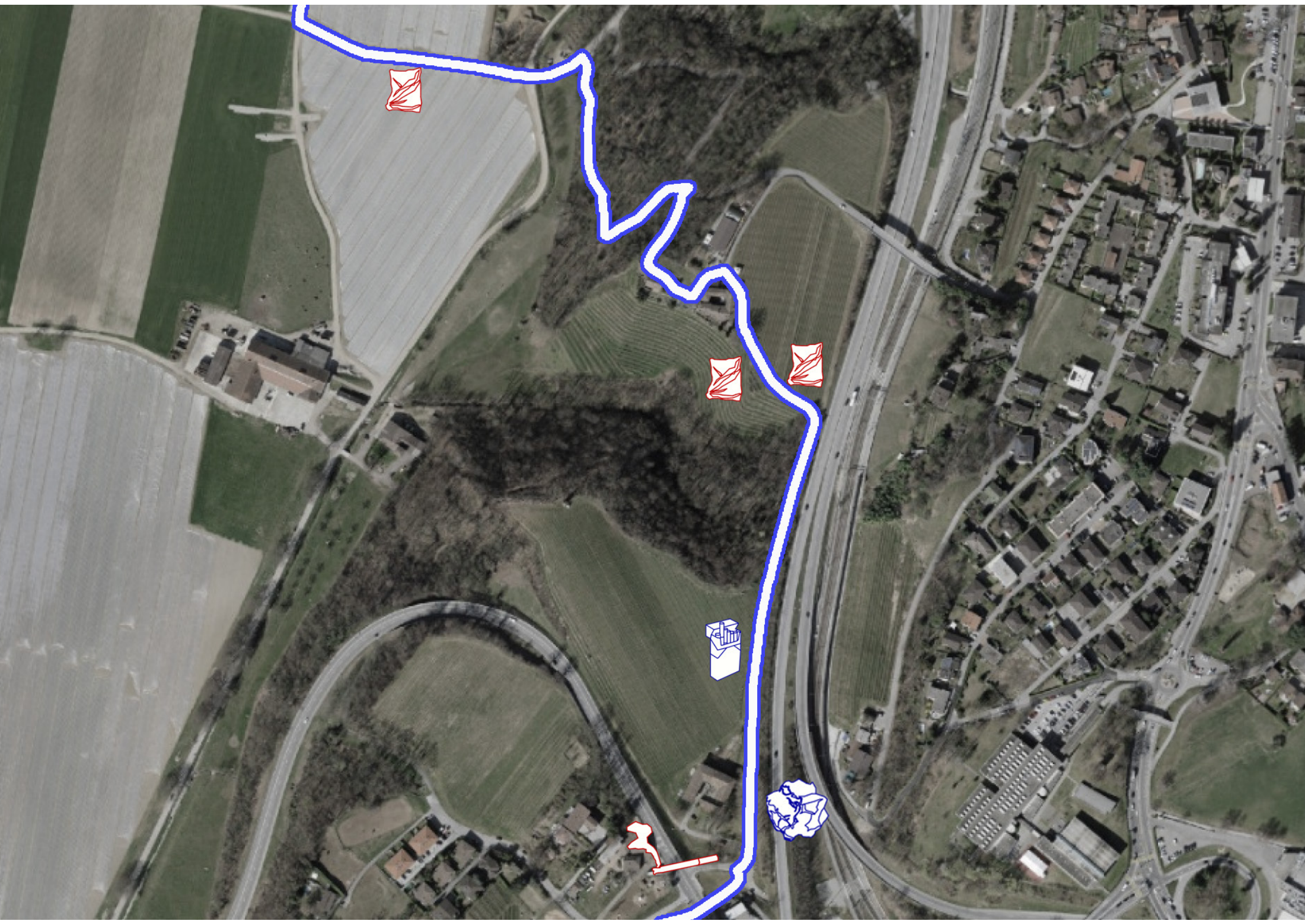


46.022200, 8.931899



46.021906, 8.931977







46.021906, 8.931977



46.023069, 8.931374



46.022466, 8.931455



46.022209, 8.932114



46.021635, 8.931690



46.020764, 8.932241



46.020205, 8.932468



46.017025, 8.930778



46.015328, 8.933044



46.014426, 8.933682



46.009017, 8.938205



46.008730, 8.938139



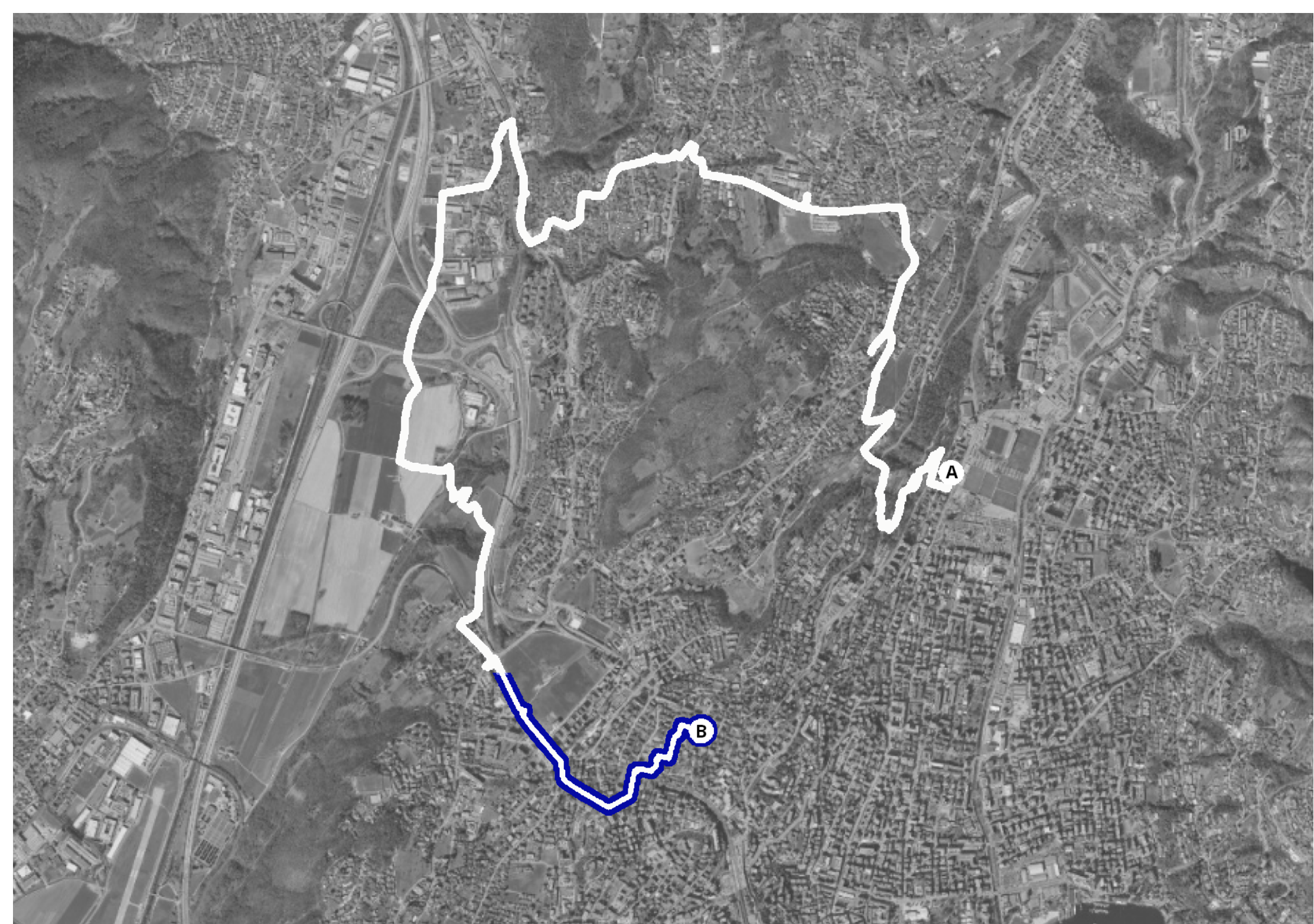
46.020789, 8.932285



46.021217, 8.931877



46.023124, 8.928181





46.020696, 8.932524



46.018368, 8.931977



46.018189, 8.931939



46.017485, 8.931864



46.016654, 8.931070



46.009796, 8.940157



46.009449, 8.940156



46.009106, 8.940092



46.009039, 8.940017



46.009004, 8.940049



46.012842, 8.934847



46.013833, 8.933971



46.014165, 8.933740



46.014059, 8.933800



46.015316, 8.933028



46.010685, 8.936739



46.009667, 8.938840



46.009542, 8.939129



46.009628, 8.938890



46.009745, 8.938850

BIG



WHEELS



IRON SIGNS



DROPPINGS



CLOTHES



VESPA



WOOD

USED



GLASS BOTTLES



TISSUES



METAL CANS



CIGARETTES



PLASTIC GLOVES



BANANA

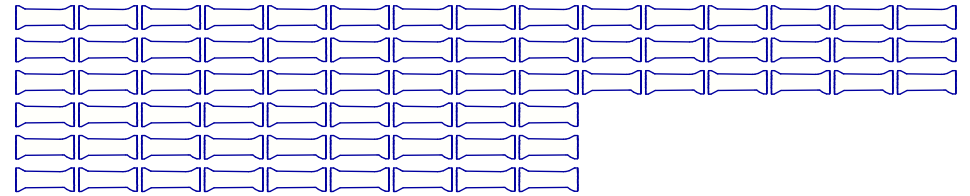


MASK

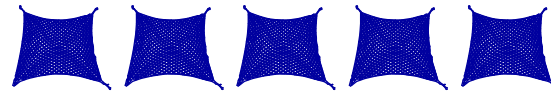


PLASTIC BOTTLES

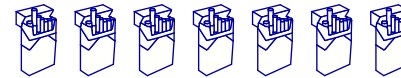
WRAPPING



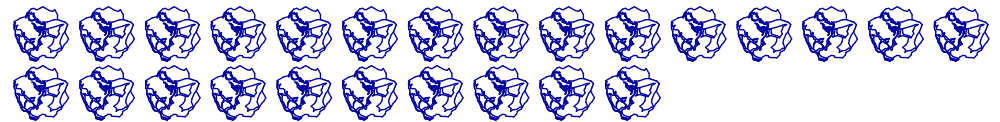
PLASTIC



FABRIC



CIGARETTE PACKS



PAPER CARTON